

Devonshire Road Colliers Wood, SW19 2EN

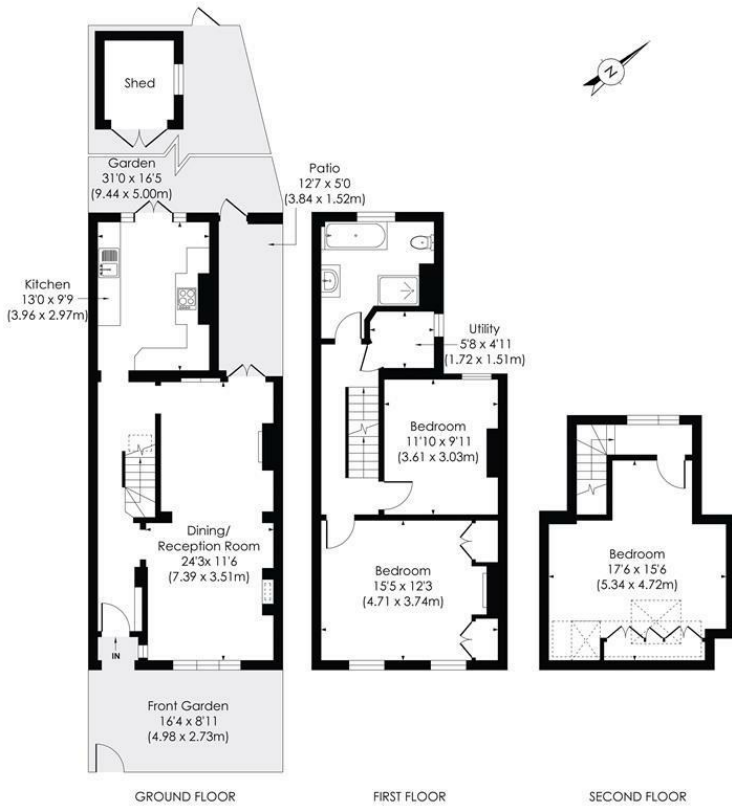
£800,000 Freehold



A truly impressive three double bedroom Period family home located on a highly sought after tree lined street within easy access of Colliers Wood Tube Station and Tooting High Street. This exceptional property comprises of a spacious through lounge/diner with exposed brick fireplace, access to the rear garden via the French doors, integrated shaker style kitchen with huge windows/French doors that lead out onto the low maintenance west facing rear garden that further benefits from secure rear access. On the first floor are two of the great sized double bedrooms, an impressive newly fitted, four piece bathroom and a separate utility room. The loft has been converted to create another large double bedroom but still has potential to be further extended to create a further bathroom. Properties of this quality are rare to the market and we urge you to book viewings early to avoid missing out on what we can only say is a truly lovely family home.

DEVONSHIRE ROAD, SW19

Approx. Gross Internal Floor Area
1283 Sq. ft/119.16 Sq. m



© Pixangle Property Marketing Ltd. info@pixangle.com Tel: 0208 870 2118
 This floor plan has been prepared for the purpose of illustration only in accordance with the latest RICS code of measuring practice and is not to scale. All measurements and areas are approximate and whilst every effort has been made to ensure the accuracy of the plan contained here, no responsibility is taken for any error, omission or misstatement.

- Period Family Home
- Three Double Bedrooms
- Beautifully Presented
- Highly Sought After Location
- Close To Tube Station
- Great Schools Nearby
- EPC Rating: E
- Merton Council Tax Band: E

Energy Efficiency Rating		Current	Potential
Very energy efficient - lower running costs			
(92 plus)	A		
(81-91)	B		
(69-80)	C		75
(55-68)	D	53	
(39-54)	E		
(21-38)	F		
(1-20)	G		
Not energy efficient - higher running costs			
England & Wales		EU Directive 2002/91/EC	

For Free Mortgage Quote and Best Mortgage Rates, call an Ellisons Mortgage Advisor on 020 8544 0518



Although these particulars are believed to be correct, their accuracy is not guaranteed and they do not form part of any contract.

Celebrating 30 years of successful Sales and Lettings in Merton

